

## FORGED FRAME ENDS & SLAM PLATES



Plain



Edge Hammered



Flower



Wavy

Section	Plain	Edge Hammered	Flower	Wavy
50 x 10 mm			N/A	N/A
40 x 10 mm				
40 x 8 mm				
40 x 6 mm				
30 x 10 mm			N/A	
30 x 8 mm			N/A	
30 x 6 mm			N/A	
25 x 10 mm			N/A	
25 x 8 mm			N/A	
25 x 6 mm			N/A	
20 x 10 mm			N/A	
20 x 8 mm			N/A	
20 x 6 mm			N/A	

**Forged Frame Ends can be made to any particular length.  
Standard Length is 250 mm.**

## FORGED SLAM PLATES

Section	Plain	Edge Hammered	Flower	Wavy
40 x 10 mm				
40 x 8 mm				
40 x 6 mm				

**Forged Slam Plates can be made to any particular length.  
Standard Length is 2.8 Metres.**

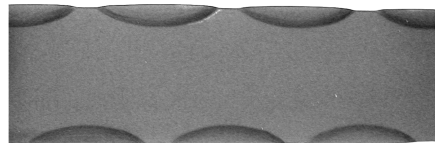
==== | Frame Ends in Sq. Bar | =====



Size		Price		
Material	Length	Plain	Edge Hammered	Wavy
12 mm Sq.	300 mm			
16 mm Sq.	300 mm			
20 mm Sq.	300 mm			
25 mm Sq.	300 mm			

==== | Forged Frame End, Shepherd's Crook | =====

\* Also available in Edge Hammered Design



Part No.	Size	Length	Price
2510 SC	25 mm x 10 mm Plain	250 mm	
3010 SC	30 mm x 10 mm Plain	250 mm	
4010 SC	40 mm x 10 mm Plain	250 mm	
2510 SCE	25 mm x 10 mm Hammered	250 mm	
3010 SCE	30 mm x 10 mm Hammered	250 mm	
4010 SCE	40 mm x 10 mm Hammered	250 mm	